

SafeSign Identity Client Minidriver Silent Installation Guide

Warning Notice

All information herein is either public information or is the property of and owned solely by A.E.T. Europe B.V. who shall have and keep the sole right to file patent applications or any other kind of intellectual property protection in connection with such information.

This information is subject to change as A.E.T. Europe B.V. reserves the right, without notice, to make changes to its products, as progress in engineering or manufacturing methods or circumstances warrant.

Installation and use of A.E.T. Europe B.V. products are subject to your acceptance of the terms and conditions set out in the license Agreement that accompanies each product. Nothing herein shall be construed as implying or granting to you any rights, by license, grant or otherwise, under any intellectual and/ or industrial property rights of or concerning any of A.E.T. Europe B.V. information.

Cryptographic products are subject to export and import restrictions. You are required to obtain the appropriate government licenses prior to shipping this Product.

The information contained in this document is provided "AS IS" without any warranty of any kind. Unless otherwise expressly agreed in writing, A.E.T. Europe B.V. makes no warranty as to the value or accuracy of information contained herein. The document could include technical inaccuracies or typographical errors. Changes are periodically added to the information herein. Furthermore, A.E.T. Europe B.V. reserves the right to make any change or improvement in the specifications data, information, and the like described herein, at any time.

A.E.T. EUROPE B.V. HEREBY DISCLAIMS ALL WARRANTIES AND CONDITIONS WITH REGARD TO THE INFORMATION CONTAINED HEREIN, INCLUDING ALL IMPLIED WARRANTIES OF MERCHANTABILITY, FITNESS FOR A PARTICULAR PURPOSE, TITLE AND NON-INFRINGEMENT. IN NO EVENT SHALL A.E.T. EUROPE B.V. BE LIABLE, WHETHER IN CONTRACT, TORT OR OTHERWISE, FOR ANY INDIRECT, SPECIAL OR CONSEQUENTIAL DAMAGES OR ANY DAMAGES WHATSOEVER INCLUDING BUT NOT LIMITED TO DAMAGES RESULTING FROM LOSS OF USE, DATA, PROFITS, REVENUES, OR CUSTOMERS, ARISING OUT OF OR IN CONNECTION WITH THE USE OR PERFORMANCE OF INFORMATION CONTAINED IN THIS DOCUMENT.

© Copyright A.E.T. Europe B.V., 2000-2024. All rights reserved.

SafeSign IC is a trademark of A.E.T. Europe B.V. All A.E.T. Europe B.V. product names are trademarks of A.E.T. Europe B.V. All other product and company names are trademarks or registered trademarks of their respective owners.

Credit Information:

"This product includes cryptographic software written by Eric A. Young (eay@cryptsoft.com)."

"This product includes software written by Tim J. Hudson (tjh@cryptsoft.com)."

Document Information

Document ID: SafeSign Identity Client Minidriver Silent Installation Guide

Project Information: SafeSign IC User Documentation

Document revision history:

Version	Date	Author	Changes
1.0	10 April 2024	Drs C.M. van Houten	First version for SafeSign IC Minidriver Version 4.1, release 4.1.0.0-AET.000

Version	Date	Name	Function
1.0	10 April 2024	Dr. A.J.P. Jeckmans	Chief Technology Officer

WE RESERVE THE RIGHT TO CHANGE SPECIFICATIONS WITHOUT NOTICE

Table of Contents

Warning Notice	1
Document Information.....	2
Table of Contents	3
Table of Figures	4
About the Product	5
1 About this Document	6
2 Create a Silent Install.....	7
2.1 Parameters.....	7
2.2 SafeSign IC Minidriver.....	8
3 Silent Install MSI Files	10
3.1 SafeSign IC Minidriver.....	10
3.1.1 Full Installation.....	10
3.1.2 Examples.....	11
3.1.3 Windows Security.....	11
3.2 Uninstall.....	13
3.2.1 Uninstall SafeSign IC software	13
3.2.2 Uninstall SafeSign IC Card Minidriver.....	13

Table of Figures

Figure 1: SafeSign IC Minidriver Setup: Custom Setup	8
Table 1: Installation Components.....	9
Figure 2: Windows Security: Would you like to install this device software?	11

About the Product

This competent all-rounder in terms of strong authentication, integration and compatibility gives you complete freedom and flexibility. Once rolled out, SafeSign Identity Client (IC) serves as the perfect guard for IT security and enables unlimited possibilities for securing your IT infrastructure.

SafeSign IC offers the most comprehensive support available on the market for (card) operating systems, smart cards, USB tokens, languages and functions. This means you have sustainable and permanent freedom of choice when it comes to manufacturer independence.

SafeSign IC enforces two- or multi factor authentication/logon to the network, client PC or application, requiring the end user to have both the USB token or smart card (something you have) and a Personal Identity Number (something you know). USB tokens and smart cards are physically and logically tamper-resistant, ensuring that the end user's digital credentials cannot be copied, modified or shared. Authentication based on smart cards or USB tokens provides the highest degree of security.

SafeSign IC is available for both fixed and mobile devices like desktops, servers, laptops, tablets and smart phones. SafeSign IC is also found in Thin Clients, printers or any other devices requiring authentication.

1 About this Document

Silent installations allow the deployment of software without showing a user interface.

The aim of this document is to describe how to install SafeSign Identity Client Minidriver (henceforth referred to as SafeSign IC Minidriver) in silent mode / without user interaction.

2 Create a Silent Install

It is possible to perform a silent installation of SafeSign IC Minidriver Windows 64-bit.

This can be done by executing a command in a command line, using the <SafeSign>.msi file (where <SafeSign> is the full name of your SafeSign IC Minidriver installer, for example, "SafeSign IC MiniDriver 4.1.0.0-AET.000 64-bits.msi"), where a few command parameters make a silent installation of SafeSign IC Minidriver possible.

2.1 Parameters

To find a list of relevant parameters and features for silent installation, you can run a complete installation, while a log file is created wherein all the properties that can be modified, will be logged.

Use the following command line (where "logfile.txt" is the name of the resulting log file) to create the log:

```
C:\>msiexec /i "SafeSign IC MiniDriver 4.1.0.0-AET.000 64-bits.msi" /log logfile.txt
```

In this log file, the relevant properties / parameters can be found under:

"Property(S): ADDLOCAL = [features]".

The sections below list the (relevant) ADDLOCAL features of SafeSign IC Minidriver that can be used to install SafeSign IC Minidriver silently.

2.2 SafeSign IC Minidriver

A default (non-silent) installation of 64-bit SafeSign IC Minidriver Version 4.1 will install the following components:

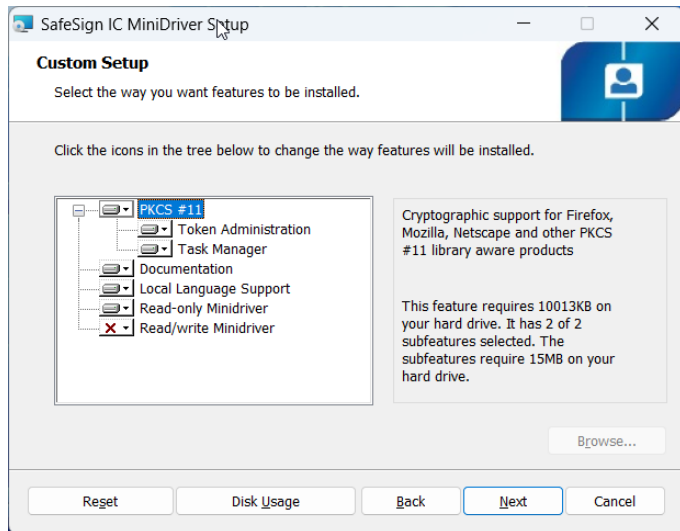


Figure 1: SafeSign IC Minidriver Setup: Custom Setup

For silent installation, these components match the following features listed in "ADDLOCAL:

Component Name	Feature Name	Description
Token Administration	TokenAdminFeature	Manages SafeSign cryptographic tokens and middleware
PKCS #11	Pkcs11Feature	Cryptographic support for Firefox, Mozilla, Netscape and other PKCS #11 library aware products
Task Manager	TaskManagerFeature	Manage tasks that are performed upon token insertion or removal
Documentation	DocumentationFeature	This will install the SafeSign documentation
Local Language Support	LocaleFeature	Support user interface localization of the utility programs
Read-only Minidriver	ReadOnlyMinidriverFeature	This will install the read-only SafeSign Minidriver
Read/write Minidriver	ReadWriteMinidriverFeature	This will install the read/write Minidriver
-	InternalFeature	Proprietary, must be installed

Table 1: Installation Components

- ➔ Note that the installation of the features will also create the appropriate registry entries in HKEY_LOCAL_MACHINE\SOFTWARE\[WOW6432Node\]A.E.T. Europe B.V.\SafeSign\2.0.

3 Silent Install MSI Files

Note that the msi installers of SafeSign IC Minidriver are delivered as compressed (zipped) files, which needs to be extracted first, before being able to install the 64-bit (.msi) version in silent mode.

The minimal installation, i.e. the installation of the required components is described, as well as the full installation of all components.

3.1 SafeSign IC Minidriver

Note that for installation and correct operation of SafeSign IC Minidriver 64-bit, both the 32-bit and 64-bit (.dll) components need to be installed.

- Note that lines should be kept together in a command prompt, even if there may be a line break in the command prompt strings below.

3.1.1 Full Installation

Full installation of all components:

```
C:\>msiexec /i "SafeSign IC MiniDriver 4.1.0.0-AET.000 64-bits.msi" /qn  
ADDLOCAL=TokenAdminFeature,Pkcs11Feature,TaskManagerFeature,DocumentationFeature,LocaleFeature  
,ReadOnlyMinidriverFeature,ReadWriteMinidriverFeature,InternalFeature
```

3.1.2 Examples

Read-only Minidriver installation:

```
C:\>msiexec /i "SafeSign IC MiniDriver 4.1.0.0-AET.000 64-bits.msi" /qn  
ADDLOCAL=ReadOnlyMinidriverFeature,InternalFeature
```

Read-only Minidriver and PKCS #11 installation:

```
C:\>msiexec /i "SafeSign IC MiniDriver 4.1.0.0-AET.000 64-bits.msi" /qn  
ADDLOCAL=Pkcs11Feature,ReadOnlyMinidriverFeature,InternalFeature
```

Read-only Minidriver and read/write Minidriver installation:

```
C:\>msiexec /i "SafeSign IC MiniDriver 4.1.0.0-AET.000 64-bits.msi" /qn ADDLOCAL=  
ReadOnlyMinidriverFeature,ReadWriteMinidriverFeature,InternalFeature
```

Read/write Minidriver and PKCS #11 installation:

```
C:\>msiexec /i "SafeSign IC MiniDriver 4.1.0.0-AET.000 64-bits.msi" /qn ADDLOCAL=  
Pkcs11Feature,ReadOnlyMinidriverFeature,ReadWriteMinidriverFeature,InternalFeature
```

3.1.3 Windows Security

During the installation of SafeSign IC read/write Minidriver (only), Windows Security will ask for permission to install the SafeSign IC read/write Minidriver:

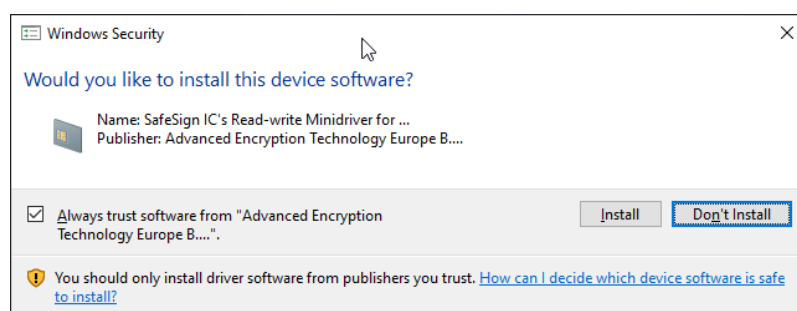


Figure 2: Windows Security: Would you like to install this device software?

In order to complete the installation of the SafeSign IC read/write Minidriver, you need to click **Install**.

It is not possible to make this dialog silent with installation parameters, but in order to ensure that it does not appear during silent installation, you need to make the Card Minidriver's certificate available in the Trusted Publisher's store.

You can do so by running (non-silent) the SafeSign Identity Client Minidriver software and:

- 1 Checking "Always trust software from "Advanced Encryption Technology Europe B..." (in dialog above), which will import the certificate in the Trusted Publisher Store

or

- 2 Not checking this checkbox, but extracting the certificate from the Card Minidriver Catalog file (aetrwcm1.cat), installed in ProgramData\A.E.T. Europe B.V\SafeSign\Minidriver, after installation is completed and import it in the Trusted Publisher store.

You can then export the certificate through the Windows Certificate Manager, so that it is available to be added to the Trusted Publisher store of the clients you want to install SafeSign IC Minidriver on. To install the Signing certificate, execute the following in a command prompt: `certutil -f -addstore`

`"TrustedPublisher" "[name of exported signing certificate].cer"`

3.2 Uninstall

De-installation of SafeSign IC Minidriver consists of two parts: uninstalling the SafeSign IC Card Minidriver and uninstalling SafeSign IC software (Token Utility, PKCS #11, etc.), as described in the SafeSign IC Installation Guide.

3.2.1 Uninstall SafeSign IC software

In order to silently uninstall SafeSign IC software, use the following command lines for 64-bit:

```
C:\>msiexec /uninstall "SafeSign IC MiniDriver 4.1.0.0-AET.000 64-bits.msi" /qn
```

3.2.2 Uninstall SafeSign IC Card Minidriver

To silently uninstall the SafeSign IC Card Minidriver, use the following command lines for the read-only Minidriver:

```
C:\>RunDll32.EXE setupapi.dll,InstallHinfSection DefaultUninstall 130 aetrocm1-cleanup.clnup
```

- ➔ Note that in order to ensure that all files are removed and no longer in use, a reboot is required. The value "130" means that users will be asked if they want to reboot. For other options, please refer to [https://msdn.microsoft.com/en-us/library/windows/desktop/aa376957\(v=vs.85\).aspx](https://msdn.microsoft.com/en-us/library/windows/desktop/aa376957(v=vs.85).aspx)